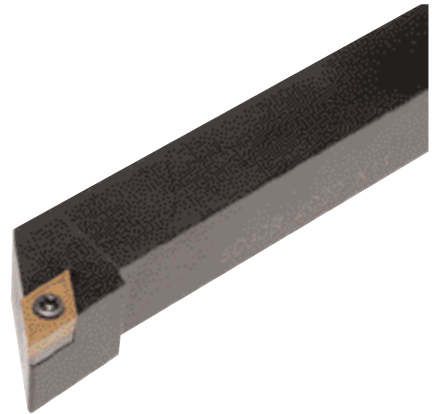
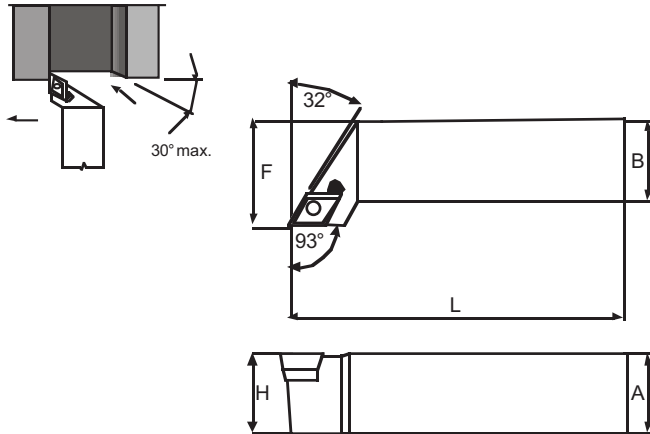




SDJCR/L

External turning tools
 Outils de tournage extérieur
 Werkzeuge für Aussenbearbeitung

Utensili per tornitura esterna



| Codice | Dimensioni mm | | | | | Inserto | Parti di Ricambio | | | |
|-------------------|---------------|------|------|-----|-----|---------|-------------------|-------|--------|-------|
| | F | H | B | A | L | | | | | |
| SDJCR/L 0808 D 07 | 10 | 8 | 8 | 8 | 60 | DCMT07 | | | TX3007 | BTX08 |
| SDJCR/L 1010 E 07 | 12 | 10 | 10 | 10 | 70 | DCMT07 | | | TX3007 | BTX08 |
| SDJCR/L 1212 F 07 | 16 | 12 | 12 | 12 | 80 | DCMT07 | | | TX3007 | BTX08 |
| SDJCR/L 1212 F 11 | 16 | 12 | 12 | 12 | 80 | DCMT11 | | | TX3509 | BTX15 |
| SDJCR/L 1616 H 11 | 20 | 16 | 16 | 16 | 100 | DCMT11 | S5515P | BO509 | TX3511 | BTX15 |
| SDJCR/L 2020 K 11 | 25 | 20 | 20 | 20 | 125 | DCMT11 | S5515P | BO509 | TX3511 | BTX15 |
| SDJCR/L 2525 M 11 | 32 | 25 | 25 | 25 | 150 | DCMT11 | S5515P | BO509 | TX3511 | BTX15 |
| Inserto | a | b | s | r | | | | | | |
| DCMT0702 | 6.35 | 7.75 | 2.38 | 0.4 | | | | | | |
| DCMT11T3 | 9.52 | 11.6 | 3.97 | 0.4 | | | | | | |

SDJCR/L

