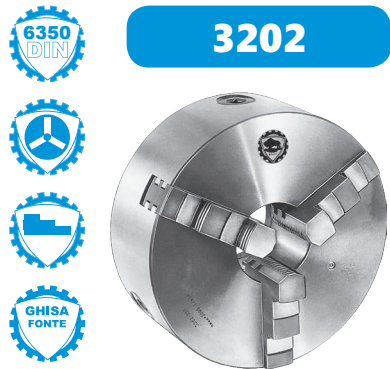

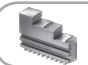



1
2
3
4
5
6
7



3202

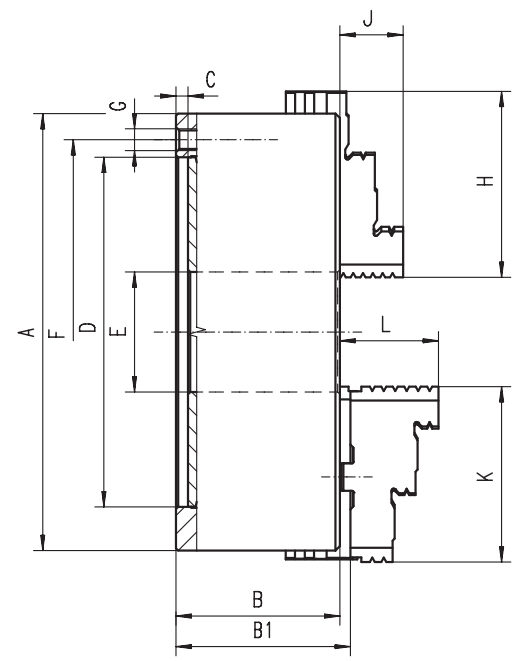
Accessori Standard
Accessoires Standard

-  **1 Serie di griffe integrali diritte**
1 Jeu de mors durs extérieurs monoblocs
-  **1 Serie di griffe integrali rovesce**
1 Jeu de mors durs intérieurs monoblocs
-  **1 Chiave**
1 Clé

Ricambi • Pièces détachées 94-105

Dati tecnici • Données techniques 106-112

Codice Articolo Code Article	Tipo Type
353202010000	3202-160
353202020100	3202-200
353202030300	3202-250
353202040500	3202-315
353202050700	3202-400
353202060900	3202-500
353202070000	3202-630



- Griffe doppia guida
- Superfici di lavoro rettificata
- Double guidage des mors
- Les surfaces de travail rectifiées

A	B	B1	C	D H7	E	F	G	J	L	kg
160	74,5	79,3	6,5	125	42	140	6xM10	25,0	43,1	10,0
200	83,0	87,8	6,5	160	55	176	6xM10	29,0	45,0	17,5
250	96,0	99,8	6,0	200	76	224	6xM12	34,0	53,0	29,0
315	111,0	115,1	6,3	260	103	286	6xM16	41,3	57,0	50,0
400	120,0	127,2	6,0	330	136	362	6xM16	56,0	67,0	85,0
500	140,0	150,8	6,0	420	190	458	6xM16	60,0	78,5	145,0
630	155,0	166,3	10,0	545	252	586	6xM16	70,0	87,0	265,0

Diametro maggiore disponibile a pagina 74-87! • De plus grands diamètres sont livrables sur la page 74-87!



3203

Accessori Standard
Accessoires Standard

-  **1 Serie di blocchetti reversibili**
1 Jeu de mors durs rapportés
-  **1 Serie di griffe base**
1 Jeu de mors semelles durs
-  **1 Chiave**
1 Clé

Ricambi • Pièces détachées 94-105

Dati tecnici • Données techniques 106-112

Tipo Type	Codice Articolo Code Article
3203-160	353203010800
3203-200	353203020000
3203-250	353203030100
3203-315	353203040300
3203-400	353203050500
3203-500	353203060700
3203-630	353203070900

3202
3203